

SOPT-LHM

Steam Operated Pumping Trap - Low Head Miniature

Description

SOPT-LHM is a steam operated pumping trap with screwed connections. This innovative product is capable of working in trapping or pumping mode automatically, depending on the process conditions. The unit is operated by steam & is used to remove condensate from the process plant under all operating conditions including vacuum/stall

Size and Connection

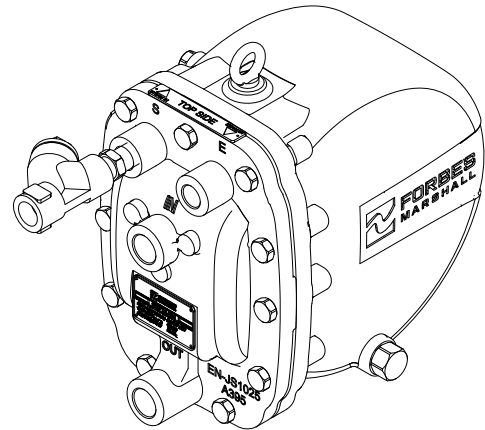
Model	Condensate inlet	Condensate outlet	Motive steam inlet	Steam Exhaust
SOPT-LHM	3/4" Screwed BSPT/NPT/BSP	3/4" Screwed BSPT/NPT/BSP	1/2" Screwed BSPT/NPT/BSP	1/2" Screwed BSPT/NPT/BSP

Limiting Conditions

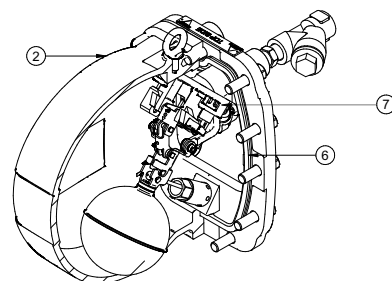
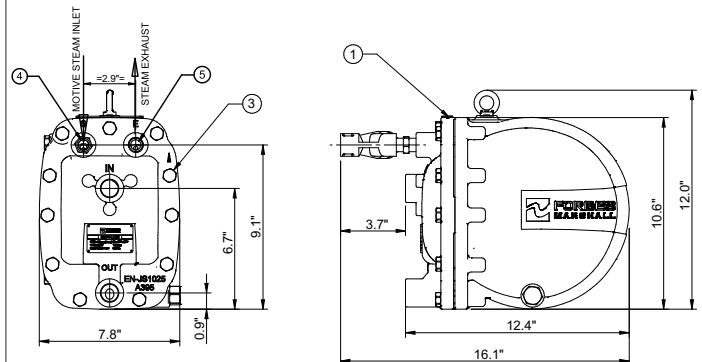
Sizes	3/4" X 3/4"
Body design Conditions	PN10
Max. Operating Pressure	65.2 psig @311° F
Max. Operating Temperature	311° F@ 65.2 psig
Min. Operating Temperature	14°F
Discharge per cycle	0.8 US gallons per strokes
Min. Required installation head from the base of SOPT-LHM	8"
Max. Cold hydraulic test pressure	217.5 psig
Max. Total Back Pressure	58 psi g

Materials

Sr.No	Description	Material
1	SOPT-LHM BASE	SG Iron ASTM A395 EN-JS1025
2	SOPT-LHM COVER	SG Iron ASTM A395 EN-JS1025
3	HEX HEAD SCREW M12	ASTM A193 B7
4	1/2" MOTIVE STEAM INLET (SCREWED)	SG Iron ASTM A395 EN-JS1025
5	1/2" STEAM EXHAUST (SCREWED)	SG Iron ASTM A395 EN-JS1025
6	MAIN FLANGE GASKET	GRAPHITE
7	INTERNAL MECHANISM	STAINLESS STEEL



Dimensions (Inch)



Note : Approximate dry weight = 44 lbs

Trapping Capacity Chart

Differential Pressure (psig)	Trapping Capacity (lbs/hr)
0	617
7.25	1732
14.5	1874
29.0	1995
43.5	2123
58.0	2315
65.2	2480

How to specify

Example: Steam Operated Pumping Trap - Low Head
Miniature

020SOPT-LHM-FPS-BN

Available Spares

Sr.No	Description	Part Code No.
1	Mechanism assembly kit	SPARE-020SOPT-LHM-MKIT
2	Inlet valve seat assembly kit	SPARE-020SOPT-LHM-IVKIT
3	Exhaust valve head assembly kit	SPARE-020SOPT-LHM-EVKIT
4	Gasket kit	SPARE-020SOPT-LHM-GKIT
5	Trap seat assembly kit	SPARE-020SOPT-LHM-TSKIT
6	Inlet check valve assembly kit	SPARE-020SOPT-LHM-ICVKIT
7	Float assembly kit	SPARE-020SOPT-LHM-FKIT
8	Main gasket kit	SPARE-020SOPT-LHM-MGKIT

How to order

Always order spares by using the description given in column headed " Available Spares" of User Manual for this product.

Pumping Capacity Chart

PUMPING CAPACITY FOR 19.7" INSTALLATION HEAD		
MOTIVE PRESSURE (psig)	BACK PRESSURE (psig)	CAPACITY (lb/hr)
65.2	0	904
	14.5	794
	29.0	728
	43.5	606
	58.0	353
58.0	0	948
	14.5	772
	29.0	661
	43.5	551
	50.7	463
43.5	0	970
	14.5	794
	29.0	573
	36.2	485
29.0	0	860
	14.5	573
	21.7	507
14.5	0	408
	7.2	342

Note

Pumping capacities shown in above chart are for condensate temperature of 194° F

For higher back pressures & different filling heads contact Forbes Marshall.



Forbes Marshall
Krohne Marshall

Forbes Marshall Arca

Codel International

Forbes Solar

Forbes Vyncke

Forbes Marshall Steam Systems

Opp 106th Milestone
Bombay Poona Road
Kasarwadi, Pune - 411 034. INDIA
Tel : 91(0)20-27145595, 39858555
Fax : 91(0)20-27147413

Email : seg@forbesmarshall.com, ccmidc@forbesmarshall.com

© All rights reserved. Any reproduction or distribution in part or as a whole without written permission of Forbes Marshall Pvt Ltd, its associate companies or its subsidiaries ("FM Group") is prohibited.

Information, designs or specifications in this document are subject to change without notice. Responsibility for suitability, selection, installation, use, operation or maintenance of the product(s) rests solely with the purchaser and/or user. The contents of this document are presented for informational purposes only. FM Group disclaims liabilities or losses that may be incurred as a consequence of the use of this information.

B-85, Phase II, Chakan Indl Area
Sawardari, Chakan, Tal. Khed
Dist. Pune - 410 501. INDIA
Tel : 91(0)2135-393400

A-34/35, MIDC H Block
Pimpri, Pune - 411 018. INDIA.
Tel : 91(0)20-27442020, 39851199
Fax : 91(0)20-27442040

CIN No.: U28996PN1985PTC037806
www.forbesmarshall.com